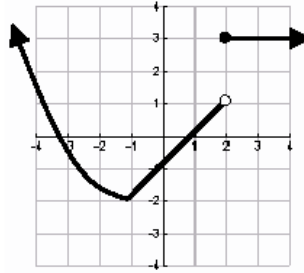


Name _____

Date _____ Pd. _____

Exit Card: Properties of Functions

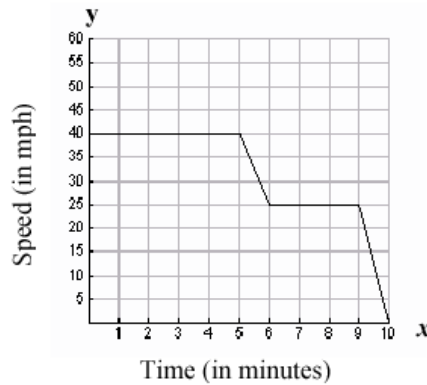
Look at the graph below .



What is the x-value of the point where the graph is not continuous?

- A. -1 B. 1 C. 2 D. 3

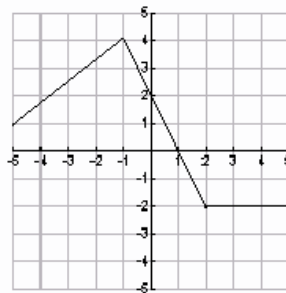
Keisha drives to work. The graph below shows her speed as a function of time.



What is the range of the function?

- A. $0 \leq y \leq 10$ B. $0 \leq y \leq 25$ C. $0 \leq y \leq 40$ D. $0 \leq y \leq 60$

Look at the graph of the function below.



What is the maximum value of the function?

- A. -2 B. -1 C. 2 D. 4