

Name _____

Date _____ Pd. _____

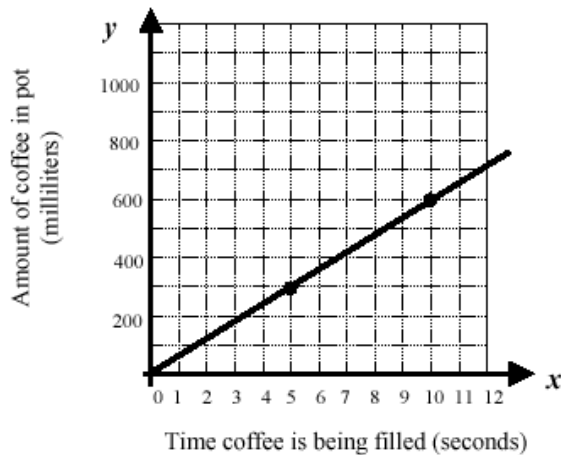
Exit Card: Direct Variation

The amount of food (f) in cups that a puppy eats per week varies directly as the age (g) in months of the puppy. A 4 month old eats 6 cups of food a week. Which of the following equations represents this direct variation?

- A. $f = 4g$ B. $f = \frac{2}{3}g$ C. $f = \frac{3}{2}g$ D. $f = 6g$

BCR

A coffee pot is being filled. The graph below shows the relationship between time (x) in seconds and the amount (y) in milliliters of coffee in the pot. The amount of coffee varies directly as the time in seconds.



Complete the following:

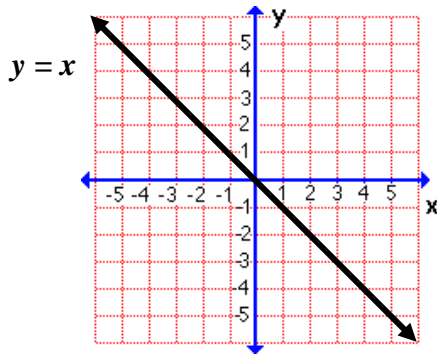
- Write an equation for the number of milliliters of coffee (y) in the pot after x seconds. Use mathematics to justify your answer. Use words, symbols or both in your justification.
- What is the meaning of the constant of variation in the context of this problem?

Name _____

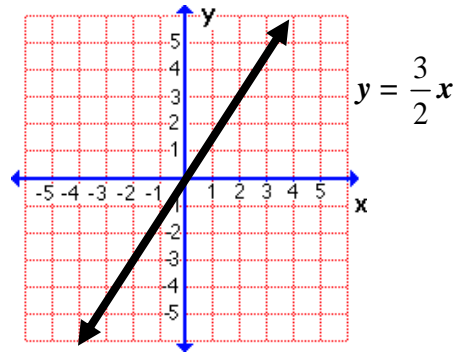
Date _____ Pd. _____

Homework: Pages 268 – 269 (18 – 21, 30, 31, 34 – 36)

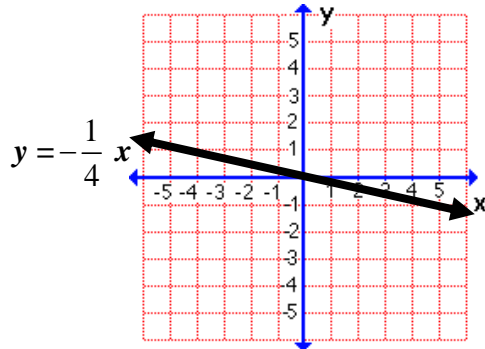
18. Determine the constant of variation and the slope



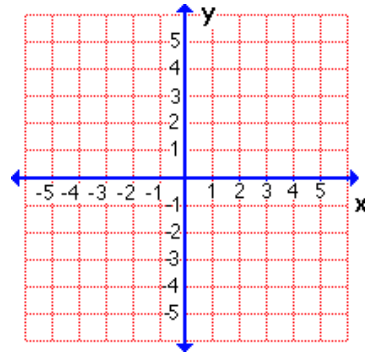
19. Determine the constant of variation and the slope



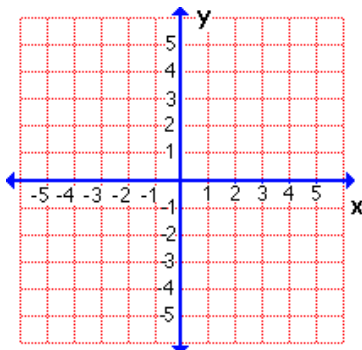
20. Determine the constant of variation and the slope



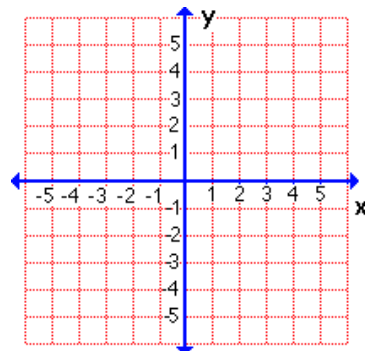
21. Graph $y = x$



30. Graph $y = -\frac{2}{3}x$



31. Graph $y = -\frac{4}{3}x$



34. Write a direct variation equation that relates x and y . If $y = 36$ when $x = 6$, find x when $y = 42$.

35. Write a direct variation equation that relates x and y . If $y = -16$ when $x = 4$, find x when $y = 20$.

36. Write a direct variation equation that relates x and y . If $y = -18$ when $x = 6$, find x when $y = 6$.