

Name _____

Date _____ Pd. _____

Notes: Slope Day 1

_____ and _____ are the same thing!

Rate of change is a _____ of two quantities. However, particularly when using _____ regression, students will see _____ represented in decimal format.

Examples:

- A hot chocolate recipe uses 5 tablespoons of chocolate and 2 cups of milk. The relationship between the amount of chocolate and milk is a _____ relationship. The _____ for this relationship is 5 tablespoons of chocolate for 2 cups of milk or 2.5 tablespoons of chocolate for 1 cup of milk.
- The slope of a line is $\frac{3}{8}$. This means that as y increases by _____ units, x increases by _____ units, or for every 1 unit increase in x there is a _____ unit increase in y .

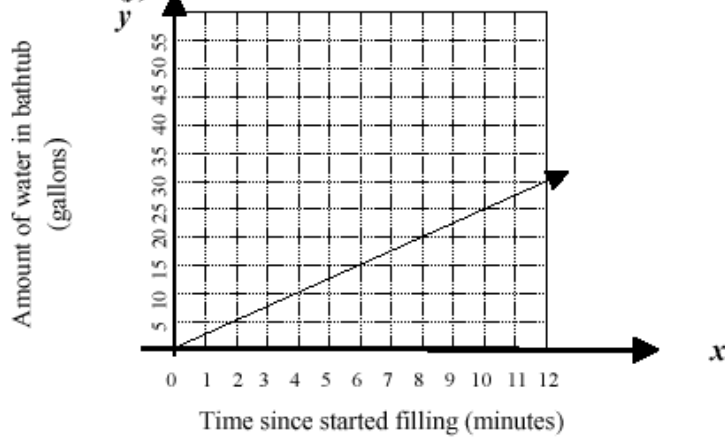
slope = _____

Name _____

Date _____ Pd. _____

Exit Card: Slope Day 1

The graph below shows the linear relationship between the number of gallons of water in a bathtub (y) and the number of minutes since the tub started filling (x).



At what rate is the bathtub filling?

- A. 0.5 gal/min B. 2.5 gal/min C. 5 gal/min D. 10 gal/min